

5

YEAR
WARRANTY



CUPRA
TERRAMAR

EXPLORE

CONFIGURE



THE CUPRA TERRAMAR

THE NEW HERO OF A NEW ERA.

WHERE PRECISION, SPEED AND
INNOVATION DRIVE SUCCESS.

A HIGHLY EMOTIONAL, SPORTY SUV
THAT EMBRACES CUPRA'S NEW DNA.

[FIND A RETAILER](#)

[TEST DRIVE](#)

[FINANCE OFFERS](#)



This Produce Guide is Interactive & Clickable



SELECT YOUR ENGINE

			CO2 WLTP	Fuel Economy WLTP	NOx	VRT Rate	Annual Motor Tax	RRP	ROTR
TERRAMAR V1	KP1BNZ	Terramar 1.5 eTSI 150hp DSG	136 g/km	6.0 l/100km	16.9 mg/km	20.00 %	€210	€47,280	€48,480
	KP1BOS	Terramar 2.0TSI 204hp DSG 4WD	171g/km	7.5l/100km	20.4mg/km	35.00%	€600	€52,880	€54,040
	KP1B8Y	Terramar eHYBRID 204hp DSG	36 g/km	1.6 l/100km	6.1 mg/km	7.00 %	€140	€49,140	€50,340
TERRAMAR V2	KP1BNZ	Terramar 1.5 eTSI 150hp DSG	136 g/km	6.1 l/100km	16.9 mg/km	20.00 %	€210	€48,895	€50,095
	KP1BOS	Terramar 2.0TSI 204hp DSG 4WD	171g/km	7.5l/100km	20.4mg/km	35.00%	€600	€54,815	€56,015
	KP1B8Y	Terramar eHYBRID 204hp DSG	36 g/km	0.4 l/100km	6.1 mg/km	7.00 %	€140	€50,445	€51,645
VZ	KP1C1Y	Terramar VZ eHYBRID 272hp DSG	37 g/km	0.4 l/100km	8.1 mg/km	7.00 %	€140	€52,815	€54,015
	KP1CYS	Terramar VZ 2.0TSI 265hp 4WD	191 g/km	8.4 l/100km	36.6 mg/km	41.00 %	€790	€58,850	€60,050
TRIBE EDITION	KP1B8Y	Terramar eHYBRID 204hp DSG	36 g/km	0.4 l/100km	6.1 mg/km	7.00 %	€140	€51,420	€52,620

Optional extras and Irish standard equipment may have an effect on the CO2, NOx and Fuel Economy figures. The CO2, NOx & Fuel Economy figures are the official figures obtained from tests under standardised EU test conditions. Pricing effective as of: 01.05.2026. Subject to change.
 ROTR: Recommended on the road price is RRP including delivery charges of €1,200 as recommended by CUPRA Ireland. Please note every effort has been made to ensure the contents of this publication (including RRP, CO2, fuel consumption and technical information) were accurate and up-to-date at the time of publishing. CUPRA Ireland reserves the right to change specification, prices and withdraw products from sale without notice. Any such alternations will be notified to CUPRA Retailers at the earliest opportunity. Please consult your local CUPRA retailer for the latest product information.

COLOUR



PREMIUM METALLIC

DARK VOID

V1 V2 VZ



METALLIC

COSMO BLUE

V1 V2 VZ



MIDNIGHT BLACK

V1 V2 VZ
TRIDE ED



GLACIAL WHITE

V1 V2 VZ



TIMANFAYA GREY

V1 V2 VZ



NON -METALLIC

FIORD BLUE

V1 V2 VZ



MATT

CENTURY BRONZE

V1 V2 VZ
TRIDE ED



MANGANESE GREEN

TRIDE ED





WHEELS



ATOMIC
18" MACHINED SPORT BLACK MATT V2 V2



COSMIC COPPER (Z9E)
19" MACHINED SPORT BLACK MATT/COOPER V2 V2



HADRON COPPER* (Z0E)
20" MACHINED SPORT BLACK MATT / COPPER V2 V2



COSMIC
18" MACHINED SPORT BLACK MATT/ V2 VZ (e-Hybrid)



SPECTRUM (Z9R)
19" MACHINED SPORT BLACK MATT / SILVER V2 VZ (2.0TSI)



GRAVITY (Z0B)
20" MACHINED SPORT BLACK MATT / SILVER V2 V2

TRIBE EDITION
WHEELS



20" SULPHUR ACCENTED 20" GRAVITY SHADOW



HADRON (Z0A)
20" MACHINED SPORT BLACK MATT / SILVER V2 V2



VORTEX** (Z0C)
20" MACHINED SPORT BLACK MATT / COPPER V2 V2

*Not available for KP1BNZ & KP1BCS | ** For KP1CYS Requires Performance Tyres

Standard
Optional

INTERIORS



DEEP OCEAN BUCKET - HM



V1 V2

MOON LIGHT DINAMICA - YA+PS2



V2 VZ

HIGH CANYON LEATHER SEATS - UD+PR2





V2 VZ

TRIBE 3D KNITTED BUCKET SEATS - JF



TRIBEED

Standard 
Optional 



Images are shown for representative purposes only and may contain optional extras.

STANDARD EQUIPMENT

TERRAMAR V1

Model	RRP
Terramar 1.5 eTSI 150hp DSG	€47,280
Terramar 2.0 TSI 204hp DSG 4WD	€52,880
Terramar eHYBRID 204hp DSG	€49,140

EXTERIOR

- *ATOMIC 18" Machined Alloy wheels in Sport black Matt*
- *LED Headlights w/ Signature*
- *Rear 3D LED lights w/Ceremony & Signature*
- *Front Fog Lamps with Cornering Function*
- *CUPRA sport suspension*
- *Door Panel Lights*
- *Aluminium Scuff Plates in Door Apertures*
- *Sports Bumpers*
- *Black Roof Rails*
- *CUPRA Welcome Light in Exterior Mirrors*

TECHNOLOGY

- *Keyless Go*
- *10.25" Customisable Digital Cockpit*
- *12.9" Infotainment System w/ Illuminated Sliders*
- *9 Speakers*
- *DAB Radio*
- *CUPRA CONNECT*
- *Front & Rear Parking Sensors*
- *Rear View Camera*
- *Wireless Charging (Fast Charge)*
- *Voice Control*
- *Wireless Android Auto & Apple CarPlay*
- *Car 2x*

SAFETY

- *Emergency Call*
- *Traffic Sign Recognition*
- *Lane Assist*
- *Attention Drowsiness Monitor w/ Driver Monitoring System*
- *Front Assist*
- *Intelligent Speed Assist*
- *Emergency Steering Support & Turn Assist*
- *Cruise Control*
- *Visual & Acoustic Seatbelt Reminder (Front & Rear)*
- *2x ISOFIX in Rear with Top Tethers & 1x ISOFIX Front Passenger Seat*
- *Daytime Running Light with Automatic Headlight Control*
- *Tyre Pressure Monitoring System*

INTERIOR

- *Leather Multi-Function Sports Steering Wheel w/Satellite Buttons*
- *Progressive Steering*
- *Textile Bucket seats*
- *CUPRA Drive Profile*
- *Climatronic 1 Zone Air Conditioning (3 Zone for eHYBRID)*
- *Aluminium Pedals*
- *Black roof cloth*
- *Reading Lights (2x Front, 2x Rear)*
- *CUPRA Drive Profile Select*
- *USB-C (2x Front, 2x Rear)*
- *Front Centre Armrest*
- *Lumbar Adjustment Front Seats*
- *Height Adjustable Driver's Seat*
- *Auto-Dimming Interior Mirror*



TECHNOLOGY

- Keyless Advanced
- 3-Zone Climate Control (Standard on eHybrid)
- Electric Tailgate & Virtual Pedal
- Towing Preparation

SAFETY

- Alarm
- Adaptive Cruise Control

INTERIOR

- Illuminated Scuff Plates in Door Apertures
- Heated Steering Wheel
- Seat Heaters in Front
- Interior Wraparound Smart Lighting

EXTERIOR

- Power Exterior Heated Mirrors
- Dark Tinted Windows

STANDARD EQUIPMENT

TERRAMAR V2

(in addition to Terramar V1)

Model	RRP
Terramar 1.5 eTSI 150hp DSG	€48,895
Terramar 2.0 TSI 204hp DSG 4WD	€54,815
Terramar eHYBRID 204hp DSG	€50,450



Images are shown for representative purposes only and may contain optional extras.

STANDARD EQUIPMENT

TERRAMAR VZ

(in addition to Terramar V1)

Model	RRP
Terramar VZ eHYBRID 272hp DSG	€52,815
Terramar VZ 2.0TSI 265hp 4Drive	€58,850

EXTERIOR

- COSMIC 19" Machined Wheels in Sport Black Matt/ Silver
- Power Folding Heated Exterior Mirrors
- Illuminated Aluminium Scuff Plates in Door Apertures

INTERIOR

- Dinamica Electric Bucked Seats with Memory for Driver
- 3 Zone Climatronic Air Conditioning
- Electric Tailgate & Virtual Pedal
- Seat Heaters in Front
- Rear Centre Armrest
- Leather Multi-Function Sports Steering Wheel, Heated w/Satellite Buttons

TECHNOLOGY

- DCC - Dynamic Chassis Control
- Keyless Advanced
- Smart Wraparound Interior Lighting
- Dark Tinted Windows

SAFETY

- Alarm
- Adaptive Cruise Control



Images are shown for representative purposes only and may contain optional extras.

STANDARD EQUIPMENT

TERRAMAR TRIBE EDITION (in addition to Terramar V1)

Model	RRP
Terramar eHYBRID 204hp DSG	€51,420

EXTERIOR

- *TRIBE 20" Machined Wheels in Sport Black & Sulphur*
- *Tribe Name Plate for Side Pillars*
- *Power Exterior Heated Mirrors*
- *Dark Tinted Windows*

INTERIOR

- *Heated Seats in Front*
- *Smart Interior Wraparound Lighting*
- *3D Knitted Bucket Seats with Green Stitching*
- *Power Adjusting Front Seats with Memory Function*
- *Heated Steering Wheel*
- *Illuminated Scuff Plates in Door Apertures*

SAFETY

- *Adaptive Cruise Control*
- *Alarm*
- *Intelligent Park Assist*
- *Remote Park Assist*
- *Side & Exist Assist*

TECHNOLOGY

- *Keyless Advanced*
- *3-Zone Climate Control (Standard on eHybrid)*
- *Electric Tailgate & Virtual Pedal*
- *Top View Camera*
- *Heads Up Display*
- *Light Assist*
- *Rear Traffic Assist*
- *Travel Assist*



E-HYBRID BENEFITS

GO FURTHER FOR LESS

e-HYBRID can achieve up to 900* kilometer per full tank of petrol making them more fuel efficient than pure combustion engines.

BEST OF BOTH WORLDS

Available with our 204 HP & 272 HP e-HYBRID powertrain. Drive in three modes: All electric; pure TSI engine; or a combination of the two.

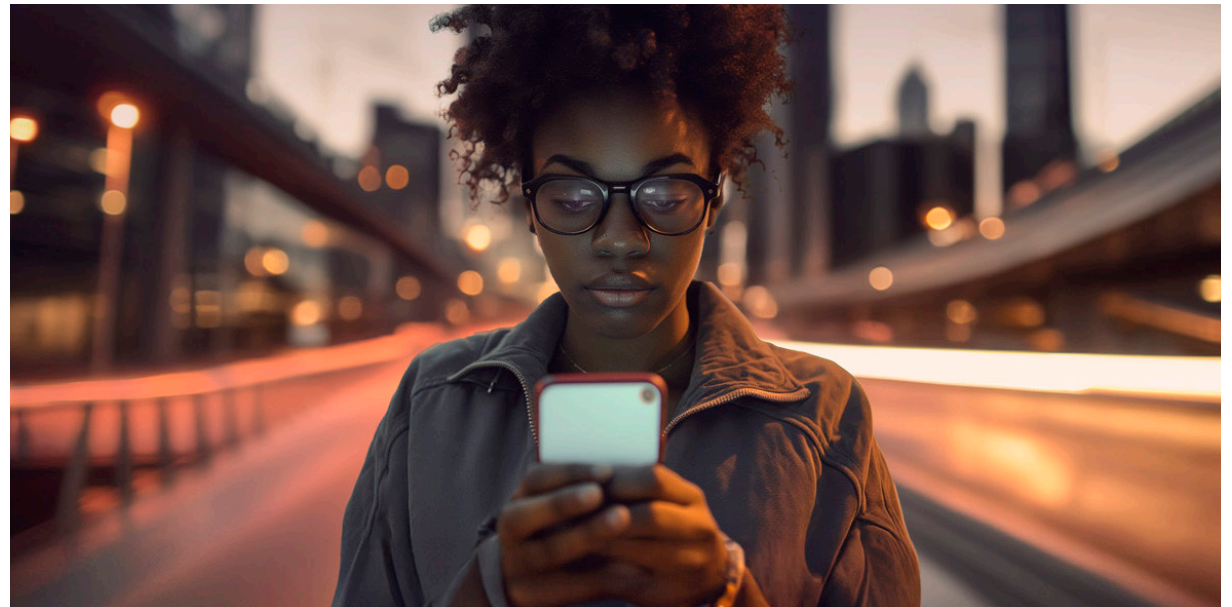
FREEDOM TO MOVE

An all electric range of up to 123 kilometers allows for emission-free urban driving.

EFFICIENT AND CONNECTED CHARGING

Charge with either a DC fast-charger or at home with an AC wallbox. Being able to charge from 10-80% on a 50KW fast charger in 26minutes whilst also monitoring activity via your smartphone with CUPRA CONNECT

CUPRA Terramar e-HYBRID comes with a MODE 2 (3-pin) as standard.



*Based on WLTP Data

OPTIONAL EQUIPMENT

			TERRAMAR V1	TERRAMAR V2	TERRAMAR VZ	TERRAMAR TRIBE EDITION	RRP From*
ALLOY WHEELS	COSMIC - 19" Wheels Machined in Sport Black Matt/Silver	Z9A	-	o	•	-	€709
	COSMIC COPPER - 19" Wheels Machined in Sport Black Matt/Copper	Z9E	-	o	-	-	€946
	SPECTRUM - 19" Wheels Machined in Sport Black Matt/Silver	Z9R	-	o	-	-	€355
	HADRON - 20" Wheels Machined in Sport Black Matt/Silver [Not available on KP1BNZ or KP1BCS]	Z0A	-	o	-	-	€709
	HADRON COPPER - 20" Wheels Machined in Sport Black Matt/Copper [Not available on KP1BNZ or KP1BCS]	Z0E	-	o	-	-	€355
	GRAVITY - 20" Wheels Machined in Sport Black Matt/Silver [For KP1CYS requires Performance Tyres (R0Z)]	Z0B	-	o	-	-	€1,170
	GRAVITY SHADOW - 20" Wheels Machined in Sport Black Matt	P02	-	-	-	o	€816
	VORTEX - 20" Wheels Machined in Sport Black Matt/Copper [For KP1CYS requires Performance Tyres (R0Z)]	Z0C	-	o	-	-	€1,525
			TERRAMAR V1	TERRAMAR V2	TERRAMAR VZ	TERRAMAR TRIBE EDITION	RRP From*
PAINT FINISHES	Soft Paint	P	•	•	•	-	No Cost
	Metallic Paint	M	o	o	o	o	€898
	Special Paint	C	o	o	o	-	€1,300
	Matt Paint	T	o	o	o	o	€2,837
			TERRAMAR V1	TERRAMAR V2	TERRAMAR VZ	TERRAMAR TRIBE EDITION	RRP From*
INTERIOR OPTIONS	Deep Ocean Bucket Seats	HM	•	•	-	-	No Cost
	Moon light [Dinamica Bucket Seats, Power Adjustment for both Front Seats & Memory for Driver, Backlit Front & Rear Door Panels]	YA + PS2	-	o	•	-	€1,182
	High Canyon [Leather Bucket Seats, Power Adjustment for both Front Seats & Memory for Driver, Backlit Front & Rear Door Panels] (Requires WF6)	UD + PR2 + WF6	-	o	-	-	€1,655 €475
	Tribe Edition Bucket Seats [3D Knitted Bucket Seats, Power Adjustment for both Front Seats & Memory for Driver, Backlit Front & Rear Door Panels]	JF	-	-	-	•	€1,655

*RRP From is based on the lowest available VRT rate for that model range, adding options to vehicles with higher VRT rates will cause options to increase in cost. Adding optional extras to vehicles can have an impact on the CO₂ & Fuel Consumption of the vehicle. This may in turn change the VRT payable on the vehicle and thus increase the Total Price. Please discuss the addition of options and their impact with your CUPRA Master within our CUPRA Network. Information & pricing subject to change without notice.

OPTIONAL EQUIPMENT

		TERRAMAR V1	TERRAMAR V2	TERRAMAR VZ	TERRAMAR TRIBE EDITION	RRP From*	
SPECIAL ITEMS	Immersive by Sennheiser - Sennheiser 12 Speaker System - Acoustic Glass	PA1	-	○	○	○	€579
	Pure Performance - Matrix HD Lights	PP2	-	○	○	○	€1,064
	Intelligent Drive - Light Assist - Intelligent Park Assist - Remote Park Assist - Trained Park Assist - Top View Camera - Side & Exit Assist - Rear Traffic Alert - Travel Assist - Heads Up Display	WF6	-	○	○	●	€1,052
	Skyline - Panoramic Sunroof	PTC	-	○	○	○	€1,300
	Towing Preparation [Wiring]	PRP	○	●	○	○	€177
	Dynamic Chassis Control [Requires WF6]	PDC	-	○	●	○	€787
	Navigation System	RN4	-	○	○	○	€778
	Emergency Spare Wheel [Not for eHYBRID Engines]	PG6	○	○	○	-	€118
	e-Hybrid Mode 3 Charging Cable	***	○	○	○	○	€320

*RRP From is based on the lowest available VRT rate for that model range, adding options to vehicles with higher VRT rates will cause options to increase in cost. Adding optional extras to vehicles can have an impact on the CO₂ & Fuel Consumption of the vehicle. This may in turn change the VRT payable on the vehicle and thus increase the Total Price. Please discuss the addition of options and their impact with your CUPRA Master within our CUPRA Network. Information & pricing subject to change without notice.*** This item must be ordered through a CUPRA retailer after-sales department.



CUPRA CONNECT

FORGET WHERE YOU'VE PARKED?

Simply open the My CUPRA app and you will be able to easily locate your vehicle in cities or large parking areas.

The GPS coordinates will give you the exact address and you are then able to navigate to it through the easy to use map.

IS MY CAR SECURE?

For those moments when you're unsure if you've locked your car.

Through the My CUPRA app, authorised users can see and control the lock status of the doors and boot.

DETERMINE YOUR IDEAL TEMPERATURE

On those cold winter mornings, you'll no longer need to sit in your car while you wait for it to warm up and defrost.

With its remote temperature control, you can program the perfect temperature you want when sitting at the wheel, defrosting the windows in the process*.

WHEN IS MY SERVICE DUE?

You have enough things in your head to have to remember your next car service.

Activate automatic service scheduling and your chosen authorised service partner will contact you as soon as your vehicle detects the need of a service (inspection or relevant warning light).

CUPRA CONNECT

CUPRA CONNECT enables access to multiple features and benefits including:

VEHICLE STATUS

- Driving Data
- Vehicle Health Data

COMFORT

- Parking Position
- Personalisation

REMOTE & CONTROL

- Anti-Theft Alert
- Remote Lock & Unlock
- Remote Auxiliary heater

SAFE & SECURE

- Service scheduling
- Customer care
- Breakdown call

NAVIGATION**

- Online POI search
- Online destination import
- Online route impact
- Online maps update
- Online traffic information
- Local hazard Information
- Online route calculation
- Dynamic POI (petrol+charging+parking information)

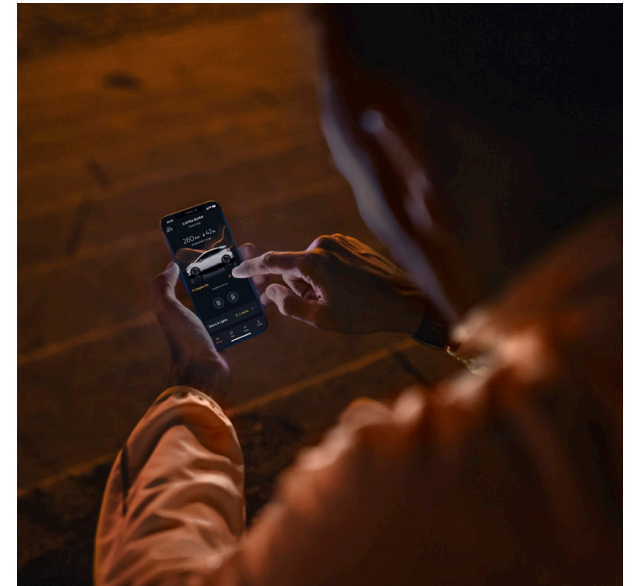
DOWNLOAD CUPRA APP



APPSTORE



PLAY STORE



*Feature only available on e-HYBRID and fully electric models. **Only available if Navigation option is fitted.

WARRANTIES



FIVE-YEAR MANUFACTURE WARRANTY

All new CUPRA's registered on or after 01/01/2026 in Ireland, come with a five year/100,000 kilometer warranty, which protects your car against the failure of most mechanical and electrical components due to manufacturing defects. This comprises a two-year manufacturer's warranty with unlimited mileage, plus a further three years up to a maximum of 100,000 kilometer (whichever is soonest).

THREE-YEAR PAINT WARRANTY

The paintwork of all models featured in this product guide are covered against manufacturing defects for a period of three years. Naturally, the vehicle must be cared for in compliance with the operating instructions which will be found in your vehicle handbook. Please consult your authorised CUPRA Retailer or repairer for full warranty details

12-YEAR BODY PROTECTION WARRANTY

The internal body sections and panels of the models featured in this product guide are covered against corrosion originating from internal cavities for 12 years. Naturally, the vehicle must be cared for in compliance with the operating instructions which will be found in your vehicle handbook. Please consult your authorised CUPRA Retailer or repairer for full warranty details.

CUPRA ROADSIDE ASSISTANCE (INCLUDING EUROPEAN COVER)

Any new CUPRA purchased and registered in the Ireland from an authorised CUPRA Retailer, is covered free by CUPRA Assistance (including European cover) for roadside repairs or recovery to an authorised repairer for the duration of the vehicles warranty. Terms and conditions apply.

CUPRA PARTS WARRANTY

CUPRA parts and accessories supplied after new vehicle delivery are covered by our 24 months parts warranty





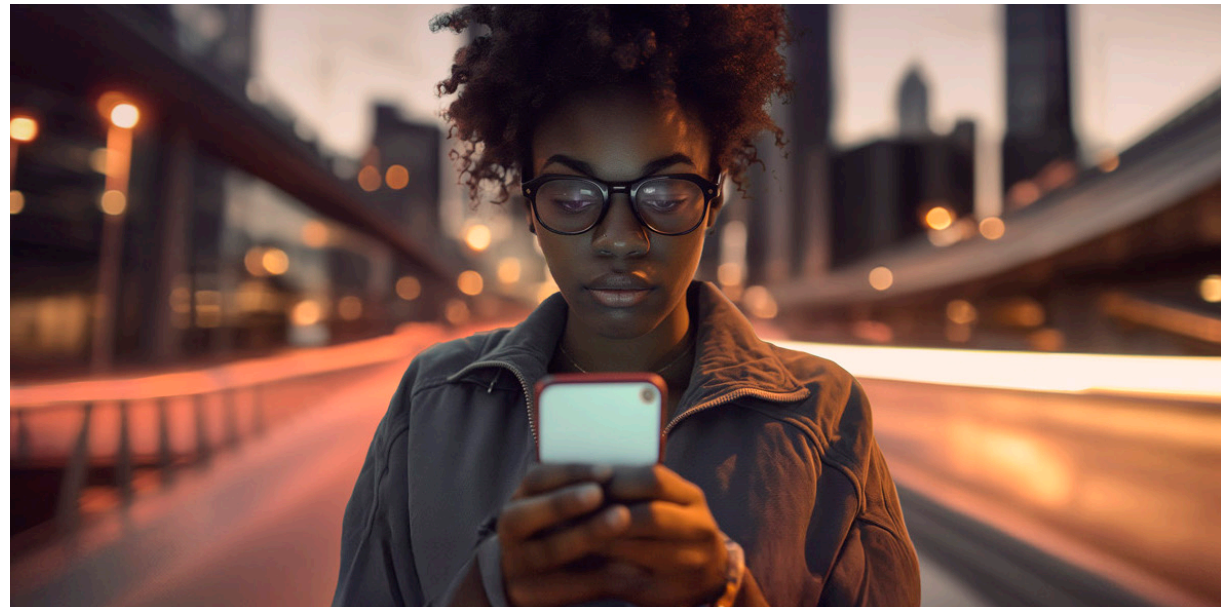
CUPRA CARE

The CUPRA Terramar has a 5 year (100,000km)* manufacturers warranty as standard. For further peace of mind, an optional CUPRA Care pack is available which takes care of the maintenance of your Terramar allowing you to enjoy the drive.

For just €16.99 per month, the Terramar Care Pack Includes:

- 3 Oil Change Service
- Brake Fluid Change
- Pollen Filter Replacement
- Complimentary Vehicle Health Check

CONTACT YOUR PREFERRED CUPRA RETAILER SHOULD YOU WISH TO PURCHASE A CARE PACK



*CUPRA 5 Year Warranty is applicable for all cars registered from 01.01.2026

TECHNICAL SPECIFICATIONS - TERRAMAR

1.5 TSI 110kW 150hp MHEV(KP1BNZ) / 1.5 TSI 150kW 204hp PHEV(KP1B8Y)

	1.5 TSI 110kW 150hp mHEV (KP1BNZ)	2.0 TSI 150kW 204hp mHEV (KP1BOS)	1.5 TSI 150kW 204hp PHEV (KP1B8Y)	
ENGINE	Cylinder/Valve (Total)	4/16	4/16	4/16
	Displacement (cc)	1498	1984	1498
	Cylinder bore and stroke (mm)	74.5 / 85.9	82.5/92.8	74.5 / 85.9
	Compression ratio	12	12.2	11.5
	Maximum power (kW (HP)/rpm)	110 (150)/ 5000-6000	150 (204)/ 4500-6000	150 (204)/ 4000-6000
	Maximum torque (Nm/rpm)	250/1500-3500	320/1500-4400	350/850-4000
	Fuel supply system	TSI Direct Injection	TSI Direct Injection	TSI Direct Injection
	Aspiration	Turbocharged	Turbocharged	Turbocharged
	Fuel type	Petrol (ROZ 95)	Petrol (ROZ 95)	Petrol (ROZ 95)
	PERFORMANCE	Maximum speed [km/h]	205	225
Acceleration 0-100 km/h (s)		9.3	7.1	8.3
TRANSMISSION	Gearbox type	DSG (Automatic)	DSG (Automatic)	DSG (Automatic)
	Transmission of drive	Front Wheel Drive	Four Wheel Drive	Front Wheel Drive
ELECTRIC SYSTEM	Battery Capacity [kWh]	-	-	25.8 (20 net)
	Battery Type	-	-	NMC
	Electric Range [km]	-	-	119
	Charging Time (AC 11kW) 0-100% SoC	-	-	2 hrs 30 mins
	Charging Time (DC 50kW) 10-80% SoC	-	-	26 min
WEIGHTS & DIMENSIONS	Length / Width / Height [mm]	4519/1863/1584	4519/1863/1584	4519/1863/1584
	Wheelbase [mm]	2681	2681	2681
	Front & rear track [mm]	1590/1580	1590/1580	1590/1580
	Boot capacity [l]	642L/508L	642L/508L	490L/400L
	Fuel tank capacity [l]	55	60	45
	Max allowable weight [kg]	2180	2280	2410
	Max towing weight (unbraked) [kg]	750	750	750
Max towing weight (braked - 12%) [kg]	1800	2200	1800	

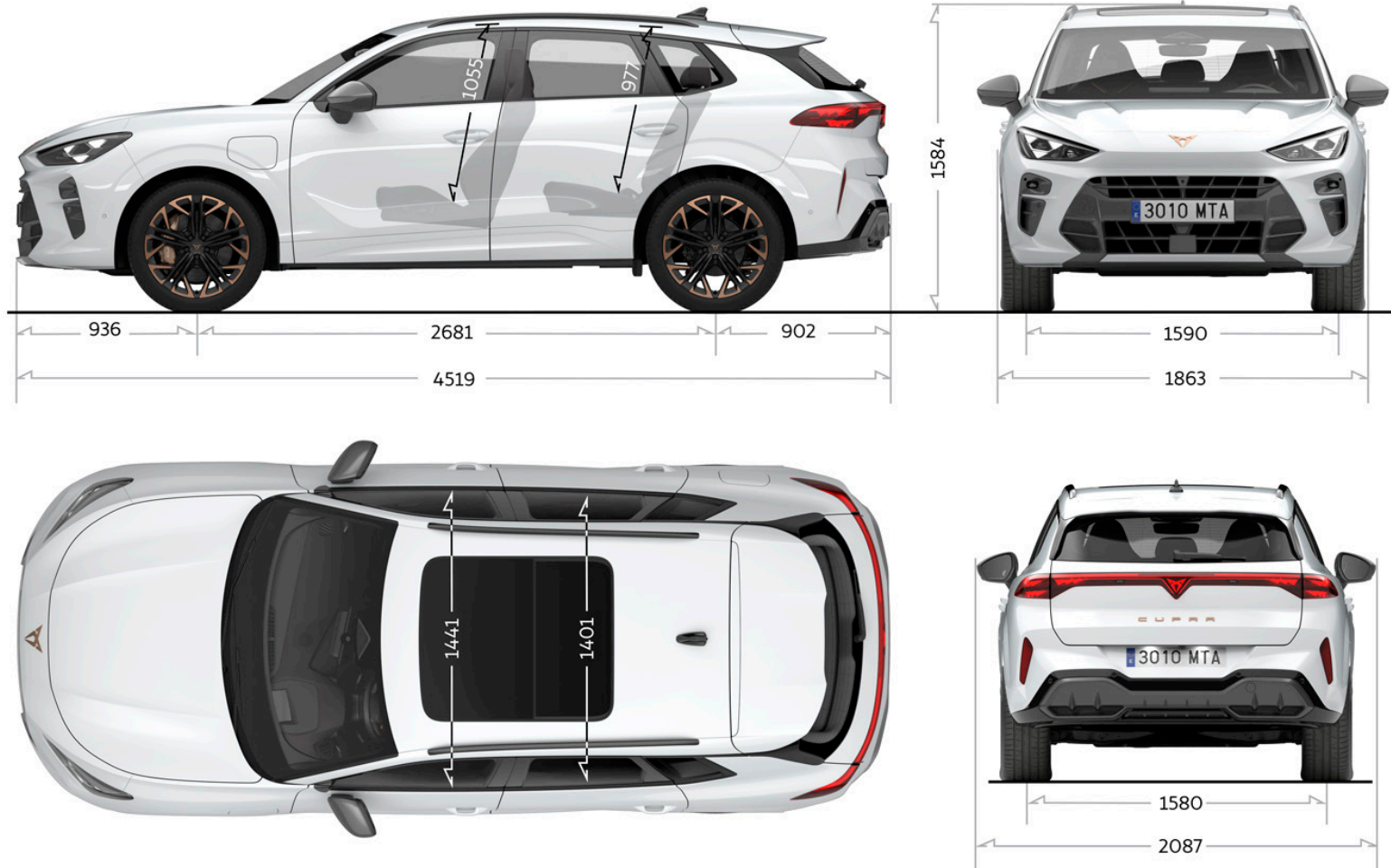
TECHNICAL SPECIFICATIONS - Terramar VZ

1.5 TSI 200kW 272hp PHEV DSG(KP1C1Y) / 2.0 TSI 195kW 265hp DSG(KP1CYS)

	1.5 TSI 200kW 272hp (KP1C1Y)	2.0 TSI 195kW 265hp (KP1CYS)	
<i>ENGINE</i>	Cylinder/Valve (Total)	4/16	4/16
	Displacement (cc)	1498	1984
	Cylinder bore and stroke (mm)	74.5 / 85.9	82.5 / 92.8
	Compression ratio	11.5	9.6
	Maximum power (kW (HP)/rpm)	200 (272)/4750-6500	195(265)/5000-6500
	Maximum torque (Nm/rpm)	400/850-4750	400/1650-4350
	Fuel supply system	TSI Direct Injection	TSI Direct Injection
	Aspiration	Turbocharged	Turbocharged
	Fuel type	Petrol (ROZ 95)	Petrol (ROZ 95)
<i>PERFORMANCE</i>	Maximum speed [km/h]	215	243
	Acceleration 0-100 km/h (s)	7.3	5.9
<i>TRANSMISSION</i>	Gearbox type	DSG (Automatic)	DSG (Automatic)
	Transmission of drive	Front Wheel Drive	Front Wheel Drive
<i>ELECTRIC SYSTEM</i>	Battery Capacity [kWh]	25.8 (20 net)	-
	Battery Type	NMC	-
	Electric Range [km]	118	-
	Charging Time (AC 11kW) 0-100% SoC	2 hrs 30 mins	-
	Charging Time (DC 50kW) 10-80% SoC	26 min	-
<i>WEIGHTS & DIMENSIONS</i>	Length / Width / Height [mm]	4519/1863/1584	4519/1863/1584
	Wheelbase [mm]	2681	2681
	Front & rear track [mm]	1590/1580	1590/1580
	Boot capacity [l]	490L/400L	602L/508L
	Fuel tank capacity [l]	45	60
	Max allowable weight [kg]	2420	2290
	Max towing weight (unbraked) [kg]	750	750
	Max towing weight (braked - 12%) [kg]	2000	2200

TECHNICAL SPECIFICATIONS - Terramar

Dimensional Drawing





EXPLORE

FIND A RETAILER

TEST DRIVE

FINANCE OFFERS

CONFIGURE

CUPRA is committed to a policy of continuous product development and reserves the right to make changes to specifications, colours and prices without notice. The information in this product guide can therefore be given as guidance only. While CUPRA makes every effort to ensure that specifications are accurate at the time of publication, you should always check with your authorised CUPRA Partner for the latest information. Due to limitations of the printing process the colours reproduced in this guide may vary slightly from the actual paint colours and material.